



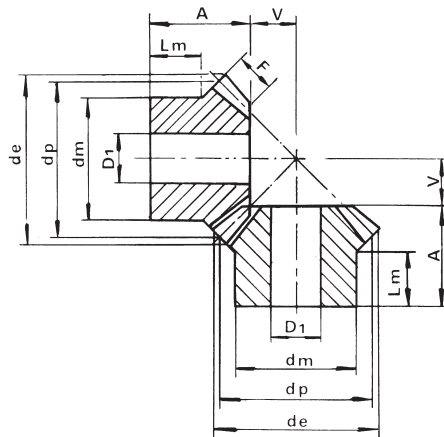
COPPIE CONICHE A DENTI DIRITTI ESECUZIONE SPECIALE CH

Coppe Coniche

ad assi normali
Angolo di pressione: 20°

Gleason System

RAPPORTO 1:1



MATERIALE: C 45 - UNI 7847

| M | Z | d _p | d _e | F | A | d _m | D ₁ | V | L _m |
|-----|----|----------------|----------------|------|-------|----------------|----------------|-------|----------------|
| 1 | 16 | 16.0 | 17.4 | 4 | 11.2 | 13.3 | 4 | 4.80 | 6.5 |
| | 19 | 19.0 | 20.4 | 4 | 11.8 | 15.3 | 4 | 6.20 | 6.5 |
| | 22 | 22.0 | 23.4 | 4.7 | 12.8 | 16.3 | 5 | 7.20 | 6.5 |
| | 26 | 26.0 | 27.4 | 5.5 | 13.3 | 20.3 | 5 | 8.70 | 7 |
| | 30 | 30.0 | 31.4 | 6.4 | 16 | 20.3 | 5 | 10.00 | 8 |
| 1.5 | 16 | 24.0 | 26.1 | 6 | 18.9 | 20.3 | 8 | 7.10 | 12 |
| | 19 | 28.5 | 30.6 | 7 | 21.3 | 20.3 | 8 | 8.70 | 12 |
| | 22 | 33.0 | 35.1 | 7.5 | 22.5 | 25.3 | 8 | 10.50 | 12 |
| | 26 | 39.0 | 41.1 | 8.5 | 23.2 | 28.3 | 8 | 12.80 | 12 |
| | 30 | 45.0 | 47.1 | 10 | 27.2 | 30.3 | 12 | 14.80 | 12 |
| 2 | 16 | 32.0 | 34.8 | 8 | 23.5 | 25.3 | 8 | 9.50 | 14 |
| | 19 | 38.0 | 40.8 | 9 | 24.2 | 25.3 | 8 | 11.80 | 12 |
| | 22 | 44.0 | 46.8 | 10 | 27.9 | 30.3 | 12 | 14.10 | 14 |
| | 26 | 52.0 | 54.8 | 12 | 31.4 | 35.3 | 12 | 16.60 | 14 |
| | 30 | 60.0 | 62.8 | 13 | 34.1 | 40.3 | 14 | 19.90 | 17 |
| 2.5 | 16 | 40.0 | 43.5 | 10 | 28.1 | 30.3 | 12 | 11.90 | 15 |
| | 19 | 47.5 | 51.0 | 11 | 27.1 | 35.3 | 12 | 14.90 | 13 |
| | 22 | 55.0 | 58.5 | 12 | 30.1 | 45.3 | 16 | 17.90 | 16 |
| | 26 | 65.0 | 68.5 | 15 | 33.2 | 45.3 | 16 | 20.80 | 16 |
| | 30 | 75.0 | 78.5 | 16 | 39 | 50.3 | 16 | 25.00 | 20 |
| 3 | 16 | 48.0 | 52.5 | 12 | 31.7 | 40.3 | 12 | 14.30 | 18 |
| | 19 | 57.0 | 61.2 | 13 | 36 | 40.3 | 14 | 18.00 | 17 |
| | 22 | 66.0 | 70.2 | 15 | 36.9 | 50.3 | 16 | 21.10 | 17 |
| | 26 | 78.0 | 82.2 | 17 | 38.4 | 50.3 | 16 | 25.60 | 18 |
| | 30 | 90.0 | 94.2 | 19 | 43.8 | 60.3 | 20 | 30.20 | 22 |
| 3.5 | 16 | 56.0 | 60.9 | 14 | 36.4 | 45.3 | 16 | 16.60 | 20 |
| | 19 | 66.5 | 71.5 | 15 | 37.8 | 50.3 | 18 | 21.00 | 19 |
| | 22 | 77.0 | 81.9 | 17 | 39.1 | 55.3 | 20 | 24.90 | 18 |
| | 26 | 91.0 | 96.0 | 20 | 43.35 | 62.3 | 20 | 29.70 | 20 |
| | 30 | 105.0 | 110.0 | 23 | 47.1 | 70.3 | 20 | 34.90 | 22 |
| 4 | 16 | 64.0 | 69.7 | 15 | 44.3 | 50.3 | 16 | 19.70 | 25 |
| | 19 | 76.0 | 81.7 | 18 | 44.4 | 55.3 | 20 | 23.60 | 22 |
| | 22 | 88.0 | 93.7 | 20 | 45.9 | 60.3 | 20 | 28.10 | 22 |
| | 26 | 104.0 | 109.7 | 25 | 48 | 70.3 | 20 | 34.00 | 22 |
| | 30 | 120.0 | 125.7 | 26 | 54.2 | 80.3 | 20 | 39.80 | 25 |
| 4.5 | 16 | 72.0 | 78.4 | 17.5 | 46.3 | 55.3 | 20 | 21.70 | 25 |
| | 19 | 85.5 | 91.8 | 20 | 49 | 62.3 | 20 | 26.57 | 25 |
| | 22 | 99.0 | 105.3 | 22 | 50.1 | 70.3 | 20 | 31.90 | 25 |
| | 26 | 117.0 | 123.0 | 25 | 54.7 | 75.3 | 20 | 38.60 | 26 |
| | 30 | 135.0 | 141.4 | 29 | 60 | 80.3 | 20 | 45.00 | 28 |
| 5 | 16 | 80.0 | 87.1 | 18 | 48.9 | 60.3 | 20 | 25.10 | 25 |
| | 19 | 95.0 | 102.1 | 22 | 52.2 | 60.3 | 20 | 29.80 | 25 |
| | 22 | 110.0 | 117.1 | 24 | 58.2 | 80.3 | 20 | 35.80 | 30 |
| | 26 | 130.0 | 137.1 | 29 | 62.7 | 80.3 | 20 | 42.30 | 30 |
| | 30 | 150.0 | 157.1 | 32 | 68.9 | 80.3 | 20 | 50.10 | 35 |

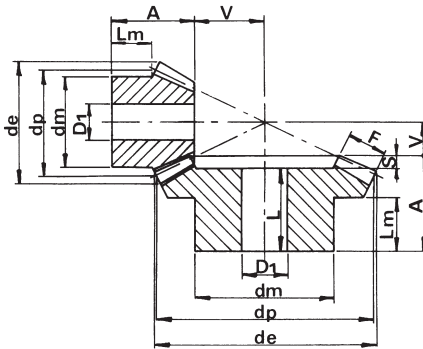


Coppie Coniche

ad assi normali
Angolo di pressione: 20°

Gleason System

RAPPORTO 1:1.5



MATERIALE: C 45 - UNI 7847

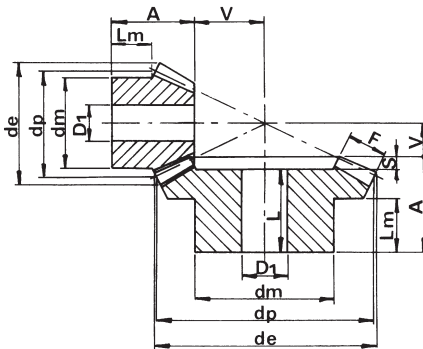
| M | Z | d _p | d _e | F | A | d _m | D ₁ | L | V | S | L _m |
|-----|----|----------------|----------------|------|------|----------------|----------------|------|------|-----|----------------|
| 1 | 16 | 16 | 18.1 | 4.3 | 12 | 13.3 | 4 | | 8 | | 7 |
| | 24 | 24 | 24.8 | 4.3 | 14.8 | 20.3 | 5 | 13.3 | 5.2 | 1.5 | 9.3 |
| 1.5 | 16 | 24 | 27.1 | 8 | 20.3 | 20.3 | 8 | | 10.7 | | 11.8 |
| | 24 | 36 | 37.2 | 8 | 24.9 | 28.3 | 8 | 22.7 | 7.1 | 2.2 | 16 |
| 2 | 16 | 32 | 36.2 | 10 | 25.2 | 25.3 | 8 | | 14.8 | | 13.8 |
| | 24 | 48 | 49.7 | 10 | 27.2 | 32.3 | 8 | 24.7 | 9.8 | 2.5 | 16 |
| 2.5 | 16 | 40 | 45.2 | 13 | 30.8 | 32.3 | 12 | | 18.2 | | 16.4 |
| | 24 | 60 | 62.1 | 13 | 34 | 45.3 | 14 | 30.8 | 12 | 3.2 | 20 |
| 3 | 16 | 48 | 54.3 | 14.5 | 32.4 | 40.3 | 12 | | 22.6 | | 16.4 |
| | 24 | 72 | 74.5 | 14.5 | 36.2 | 55.3 | 16 | 32 | 14.8 | 4.2 | 20 |
| 3.5 | 16 | 56 | 63.3 | 18 | 40.4 | 45.3 | 16 | | 25.6 | | 20.4 |
| | 24 | 84 | 86.9 | 18 | 44.2 | 55.3 | 20 | 40 | 16.8 | 4.2 | 25 |
| 4 | 16 | 64 | 72.4 | 18 | 46.8 | 50.3 | 16 | | 31.2 | | 25.4 |
| | 24 | 96 | 99.3 | 18 | 45.5 | 60.3 | 20 | 40 | 20.5 | 5.5 | 25 |
| 4.5 | 16 | 72 | 81.4 | 20 | 47.6 | 60.3 | 20 | | 35.4 | | 25.1 |
| | 24 | 108 | 111.7 | 20 | 57.8 | 80.3 | 20 | 51.3 | 23.2 | 6.5 | 35 |
| 5 | 16 | 80 | 90.5 | 24 | 54.1 | 60.3 | 20 | | 37.9 | | 25.4 |
| | 24 | 120 | 124.1 | 24 | 61.1 | 80.3 | 20 | 54.5 | 24.9 | 6.6 | 35 |

Coppie Coniche

ad assi normali
Angolo di pressione: 20°

Gleason System

RAPPORTO 1:2



MATERIALE: C 45 - UNI 7847

| M | Z | d _p | d _e | F | A | d _m | D ₁ | L | V | S | L _m |
|-----|----|----------------|----------------|------|------|----------------|----------------|------|------|-----|----------------|
| 1 | 15 | 15.0 | 17.4 | 5 | 11.9 | 13.3 | 4 | | 10.1 | | 6.5 |
| | 30 | 30.0 | 30.6 | 5 | 15.1 | 20.3 | 5 | 13.7 | 4.9 | 1.4 | 9 |
| 1.5 | 15 | 22.5 | 26.1 | 9 | 21.1 | 19.3 | 8 | | 13.9 | | 11.9 |
| | 30 | 45.0 | 45.9 | 9 | 25.2 | 32.3 | 8 | 23 | 6.8 | 2.2 | 16 |
| 2 | 15 | 30.0 | 34.8 | 11.5 | 26 | 25.3 | 8 | | 19.0 | | 14.1 |
| | 30 | 60.0 | 61.2 | 11.5 | 29.8 | 40.3 | 14 | 26.8 | 9.2 | 3 | 18 |
| 2.5 | 15 | 37.5 | 43.5 | 15 | 31.8 | 32.3 | 12 | | 23.2 | | 16.2 |
| | 30 | 75.0 | 76.5 | 15 | 33.7 | 45.3 | 16 | 30 | 11.3 | 3.7 | 20 |
| 3 | 15 | 45.0 | 52.2 | 17 | 37.3 | 40.3 | 12 | | 28.7 | | 19.9 |
| | 30 | 90.0 | 91.8 | 17 | 42.1 | 55.3 | 16 | 38 | 13.9 | 4.1 | 25 |
| 3.5 | 15 | 52.5 | 60.9 | 20.5 | 46.1 | 45.3 | 16 | | 32.9 | | 24.7 |
| | 30 | 105.0 | 107.1 | 20.5 | 45 | 60.3 | 20 | 40 | 16.0 | 5 | 25 |
| 4 | 15 | 60.0 | 69.6 | 22.5 | 48.6 | 50.3 | 20 | | 38.4 | | 24.6 |
| | 30 | 120.0 | 122.3 | 22.5 | 57.3 | 80.3 | 20 | 51.9 | 18.7 | 5.4 | 35 |
| 4.5 | 15 | 67.5 | 78.3 | 26 | 51.4 | 60.3 | 20 | | 42.6 | | 24.7 |
| | 30 | 135.0 | 137.6 | 26 | 60.3 | 80.3 | 20 | 54.3 | 20.7 | 6 | 35 |
| 5 | 15 | 75.0 | 87 | 30 | 57.6 | 60.3 | 20 | | 46.4 | | 25.3 |
| | 30 | 150.0 | 152.9 | 30 | 62.5 | 80.3 | 20 | 56 | 22.5 | 6.5 | 35 |



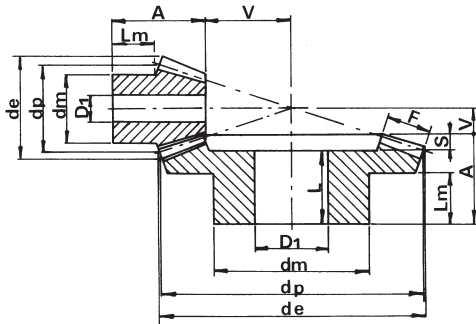
COPPIE CONICHE A DENTI DIRITTI

Coppie Coniche

ad assi normali
Angolo di pressione: 20°

Gleason System

RAPPORTO 1:2.5



Coppie coniche ad esaurimento.

MATERIALE: C 45 - UNI 7847

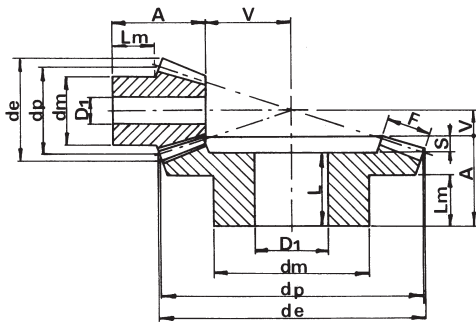
| M | Z | d _p | d _e | F | A | d _m | D ₁ | L | V | S | L _m |
|-----|----|----------------|----------------|------|------|----------------|----------------|------|------|-----|----------------|
| 1 | 16 | 16 | 18.6 | 6.5 | 14.4 | 13.3 | 4 | | 13.6 | | 7.4 |
| | 40 | 40 | 40.4 | 6.5 | 14.8 | 25.3 | 8 | 13 | 5.2 | 1.8 | 9 |
| 1.5 | 16 | 24 | 27.9 | 11.5 | 24.2 | 20.3 | 8 | | 18.8 | | 12.3 |
| | 40 | 60 | 60.7 | 11.5 | 27.8 | 40.3 | 14 | 25.5 | 7.2 | 2.3 | 18 |
| 2 | 16 | 32 | 37.2 | 15 | 29.6 | 25.3 | 8 | | 25.4 | | 13.7 |
| | 40 | 80 | 80.9 | 15 | 32.4 | 45.3 | 16 | 29 | 9.6 | 3.4 | 20 |
| 2.5 | 16 | 40 | 46.4 | 19 | 38.4 | 32.3 | 12 | | 31.6 | | 18.5 |
| | 40 | 100 | 101.1 | 19 | 39.8 | 55.3 | 16 | 35.9 | 12.2 | 3.9 | 25 |
| 3 | 16 | 48 | 55.7 | 21.5 | 41.9 | 40.3 | 16 | | 39.1 | | 19.6 |
| | 40 | 120 | 121.4 | 21.5 | 47.9 | 60.3 | 20 | 44 | 15.1 | 3.9 | 30 |
| 3.5 | 16 | 56 | 65.0 | 22.6 | 49.1 | 45.3 | 20 | | 47.9 | | 25 |
| | 40 | 140 | 141.6 | 22.6 | 54.6 | 80.3 | 20 | 50 | 18.4 | 4.6 | 35 |
| 4 | 16 | 64 | 74.3 | 26 | 52.5 | 55.3 | 20 | | 54.5 | | 25.3 |
| | 40 | 170 | 161.8 | 26 | 57.0 | 80.3 | 20 | 50.5 | 21.0 | 6.5 | 35 |
| 4.5 | 16 | 72 | 83.6 | 30 | 56.3 | 60.3 | 20 | | 60.7 | | 24.6 |
| | 40 | 180 | 182.1 | 30 | 59.7 | 80.3 | 20 | 53 | 23.3 | 6.7 | 35 |
| 5 | 16 | 80 | 92.9 | 32 | 65.4 | 60.3 | 20 | | 68.6 | | 30.1 |
| | 40 | 200 | 202.3 | 32 | 65.7 | 90.3 | 20 | 58.3 | 26.3 | 7.4 | 40 |

Coppie Coniche

ad assi normali
Angolo di pressione: 20°

Gleason System

RAPPORTO 1:3



MATERIALE: C 45 - UNI 7847

| M | Z | d _p | d _e | F | A | d _m | D ₁ | L | V | S | L _m |
|-----|----|----------------|----------------|------|------|----------------|----------------|------|------|-----|----------------|
| 1 | 15 | 15 | 17.7 | 7.1 | 16.6 | 13.3 | 4 | | 15.4 | | 9.2 |
| | 45 | 45 | 45.3 | 7.1 | 17.1 | 25.3 | 8 | 15.2 | 4.9 | 1.9 | 10 |
| 1.5 | 15 | 22.5 | 26.5 | 10.5 | 22.6 | 19.3 | 8 | | 23.4 | | 11.7 |
| | 45 | 67.5 | 68.1 | 10.5 | 29.6 | 45.3 | 14 | 27.2 | 7.4 | 2.4 | 20 |
| 2 | 15 | 30 | 35.4 | 14 | 28.9 | 25.3 | 8 | | 31.1 | | 14.2 |
| | 45 | 90 | 90.8 | 14 | 32.1 | 45.3 | 16 | 28.4 | 9.9 | 3.7 | 20 |
| 2.5 | 15 | 37.5 | 44.2 | 18 | 34.6 | 32.3 | 12 | | 38.4 | | 15.9 |
| | 45 | 112.5 | 113.4 | 18 | 39.7 | 60.3 | 20 | 35.3 | 12.3 | 4.4 | 25 |
| 3 | 15 | 45 | 53.0 | 21 | 41.3 | 40.3 | 16 | | 46.7 | | 19.7 |
| | 45 | 135 | 136.1 | 21 | 47.2 | 60.3 | 20 | 42 | 14.8 | 5.2 | 30 |
| 3.5 | 15 | 52.5 | 61.9 | 23.5 | 49.6 | 45.3 | 20 | | 55.4 | | 25 |
| | 45 | 157.5 | 158.8 | 23.5 | 54.4 | 80.3 | 20 | 48.6 | 17.6 | 5.8 | 35 |
| 4 | 15 | 60 | 70.7 | 27.5 | 54.3 | 50.3 | 20 | | 62.7 | | 25.4 |
| | 45 | 180 | 181.5 | 27.5 | 57 | 80.3 | 20 | 50.5 | 20 | 6.5 | 35 |
| 4.5 | 15 | 67.5 | 79.5 | 28.5 | 55.2 | 55.3 | 20 | | 72.8 | | 24.8 |
| | 45 | 202.5 | 204.2 | 28.5 | 63.9 | 90.3 | 20 | 57 | 23.1 | 6.9 | 40 |
| 5 | 15 | 75 | 88.4 | 33 | 65.3 | 60.3 | 20 | | 79.7 | | 30 |
| | 45 | 225 | 226.9 | 33 | 66.7 | 90.3 | 20 | 59.2 | 25.3 | 7.5 | 40 |

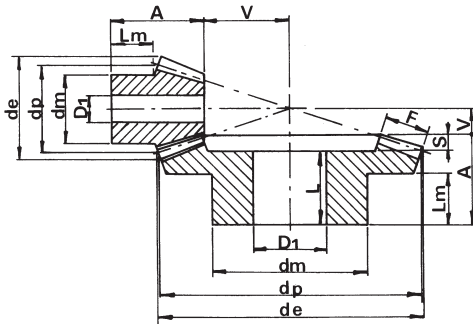


Coppie Coniche

ad assi normali
Angolo di pressione: 20°

Gleason System

RAPPORTO 1:3.5



Coppie coniche ad esaurimento.

MATERIALE: C 45 - UNI 7847

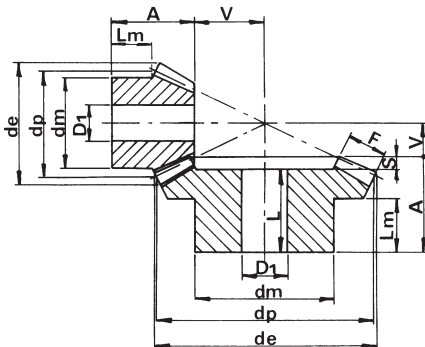
| M | Z | d _p | d _e | F | A | d _m | D ₁ | L | V | S | L _m |
|-----|----|----------------|----------------|-----|------|----------------|----------------|------|------|-----|----------------|
| 1 | 16 | 16 | 18.7 | 8.7 | 16.6 | 13.3 | 4 | | 19.4 | | 7.6 |
| | 56 | 56 | 56.3 | 8.7 | 16.7 | 30.3 | 8 | 14.2 | 5.3 | 2.5 | 10 |
| 1.5 | 16 | 24 | 28.1 | 12 | 24 | 20.3 | 8 | | 30 | | 11.5 |
| | 56 | 84 | 84.5 | 12 | 34.8 | 45.3 | 14 | 32 | 8.2 | 2.8 | 25 |
| 2 | 16 | 32 | 37.5 | 16 | 30.9 | 25.3 | 8 | | 40.1 | | 14.1 |
| | 56 | 112 | 112.6 | 16 | 37.1 | 55.3 | 16 | 33.3 | 10.9 | 3.8 | 25 |
| 2.5 | 16 | 40 | 46.8 | 20 | 38.9 | 32.3 | 14 | | 50.1 | | 17.9 |
| | 56 | 140 | 140.8 | 20 | 44.4 | 60.3 | 20 | 40 | 13.6 | 4.4 | 30 |
| 3 | 16 | 48 | 56.2 | 24 | 49.9 | 40.3 | 16 | | 60.1 | | 24.9 |
| | 56 | 168 | 169 | 24 | 52.7 | 80.3 | 20 | 47.5 | 16.3 | 5.2 | 35 |
| 3.5 | 16 | 56 | 65.6 | 25 | 52 | 45.5 | 20 | | 73 | | 25.5 |
| | 56 | 196 | 197.1 | 25 | 55.1 | 80.3 | 20 | 49.1 | 19.9 | 6 | 35 |

Coppie Coniche

ad assi normali
Angolo di pressione: 20°

Gleason System

RAPPORTO 1:4



MATERIALE: C 45 - UNI 7847

| M | Z | d _p | d _e | F | A | d _m | D ₁ | L | V | S | L _m |
|-----|----|----------------|----------------|-----|------|----------------|----------------|------|-------|-----|----------------|
| 1 | 15 | 15.0 | 17.80 | 9.3 | 17.2 | 13.3 | 4 | | 20.8 | | 7.7 |
| | 60 | 60 | 60.30 | 9.3 | 17.1 | 30.3 | 8 | 15.2 | 4.9 | 1.9 | 10 |
| 1.5 | 15 | 22.5 | 26.70 | 11 | 23 | 20.3 | 8 | | 34.0 | | 11.7 |
| | 60 | 90 | 90.40 | 11 | 34 | 50.3 | 16 | 31.2 | 8.0 | 2.8 | 25 |
| 2 | 15 | 30 | 35.60 | 16 | 31 | 25.3 | 8 | | 44.0 | | 14.4 |
| | 60 | 120 | 120.60 | 16 | 37.6 | 60.3 | 16 | 34.2 | 10.4 | 3.4 | 25 |
| 2.5 | 15 | 37.5 | 44.50 | 19 | 38.1 | 32.3 | 14 | | 55.9 | | 18.4 |
| | 60 | 150 | 150.70 | 19 | 44.8 | 60.3 | 20 | 40 | 13.2 | 4.8 | 30 |
| 3 | 15 | 45 | 53.30 | 23 | 48.1 | 40.3 | 16 | | 66.9 | | 24.5 |
| | 60 | 180.0 | 180.80 | 23 | 53.2 | 80.3 | 20 | 48.2 | 15.8 | 5 | 35 |
| 3.5 | 15 | 52.5 | 62.20 | 26 | 52.1 | 45.3 | 20 | | 78.9 | | 25.1 |
| | 60 | 210 | 211.00 | 26 | 60.4 | 90.3 | 20 | 54.4 | 18.6 | 6 | 40 |
| 4 | 15 | 60 | 71.10 | 30 | 55.1 | 50.3 | 20 | | 89.9 | | 23 |
| | 60 | 240 | 241.10 | 30 | 60.8 | 90.3 | 20 | 53 | 21.2 | 7.8 | 40 |
| 4.5 | 15 | 67.5 | 79.97 | 32 | 57 | 52.3 | 20 | | 102.9 | | 23 |
| | 60 | 270 | 271.24 | 32 | 62 | 90.3 | 20 | 53.5 | 24.3 | 8.5 | 40 |
| 5 | 15 | 75 | 88.80 | 34 | 62 | 55.3 | 20 | | 115.7 | | 25 |
| | 60 | 300.0 | 301.30 | 34 | 65 | 90.3 | 20 | 55 | 27.0 | 10 | 40 |